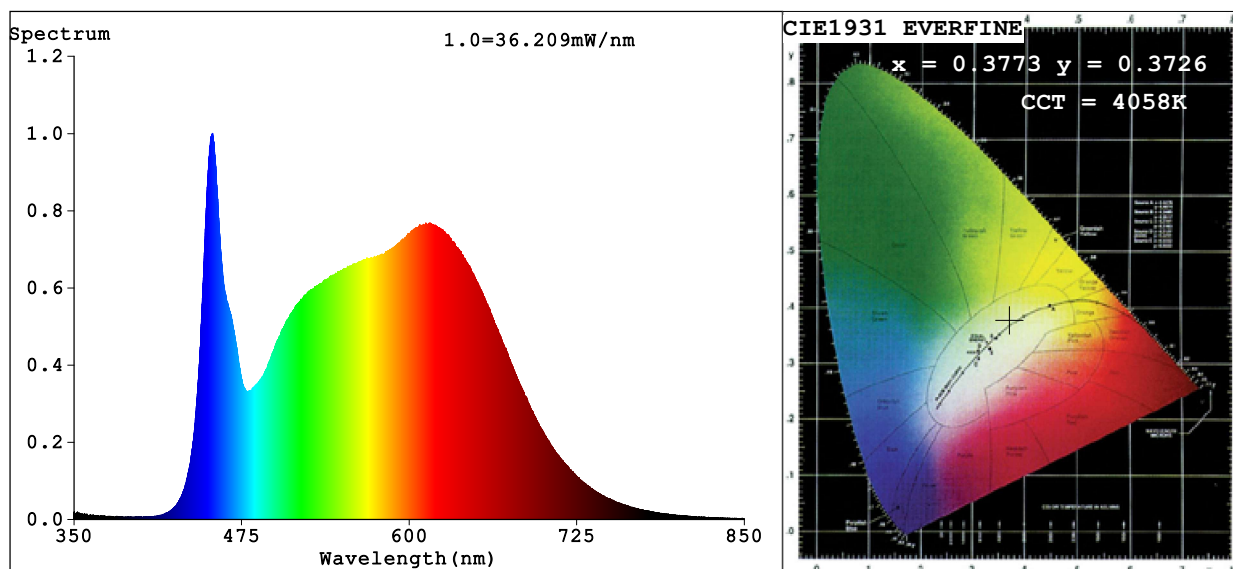


Spectrum Test Report



Color Parameters:

Chromaticity Coordinate: $x=0.3773$ $y=0.3726$ $u'=0.2247$ $v'=0.4993$

CCT=4058K (Duv=-0.0010) Dominant WL:Ld =579.5nm Purity=25.0%

Ratio:R=19.9% G=75.6% B=4.4%; Peak WL:Lp=453.2nm FWHM=23.9nm

Render Index:Ra=94.4 CRI=91.5 TM30:Rf=91 Rg=99

R1 =96 R2 =98 R3 =97 R4 =94 R5 =94 R6 =94 R7 =94

R8 =89 R9 =73 R10=93 R11=94 R12=71 R13=97 R14=98 R15=93

Photo Parameters:

Flux = 1688 lm Eff. : 58.68 lm/W Fe = 5.826 W

Electrical parameters:

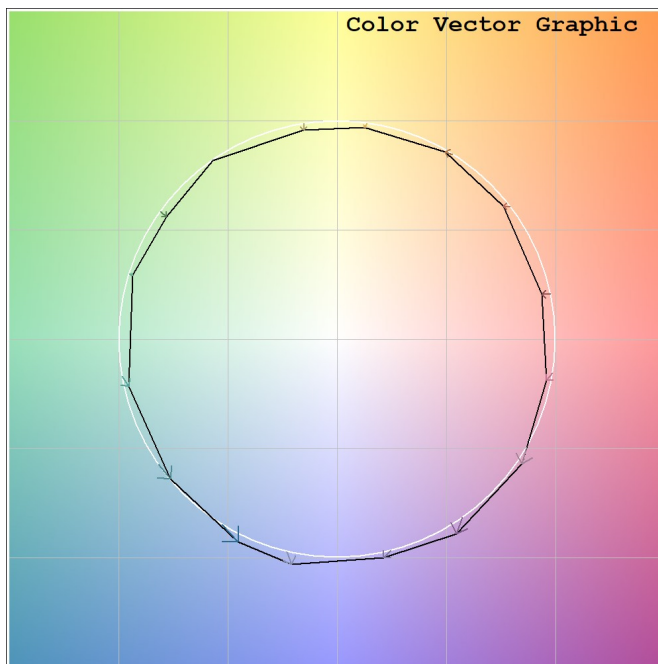
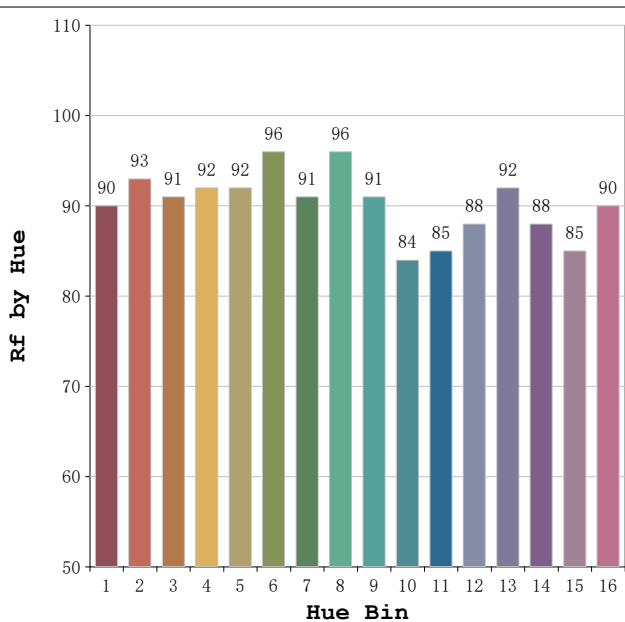
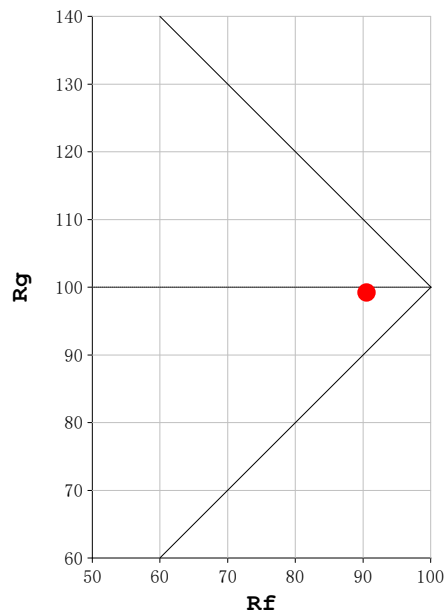
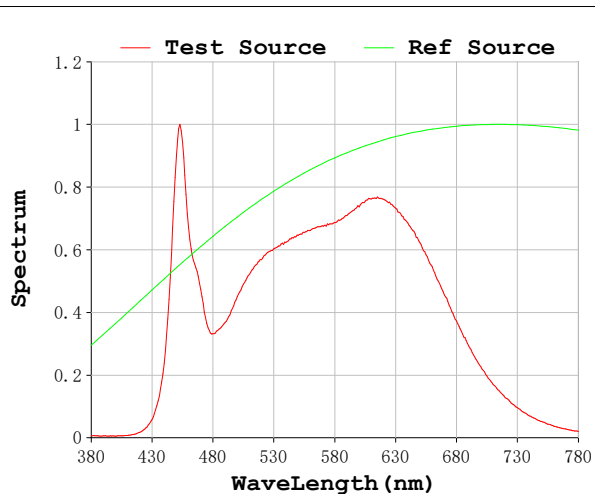
V = 230.07 V I = 0.1309 A P = 28.76 W PF = 0.9548

Status: Integral T = 888 ms Ip = 44584 (68%)

Model:Spotia Zomm CTT
Tester:Sergio Carneros
Temperature:20Deg
Manufacturer:Luz Negra

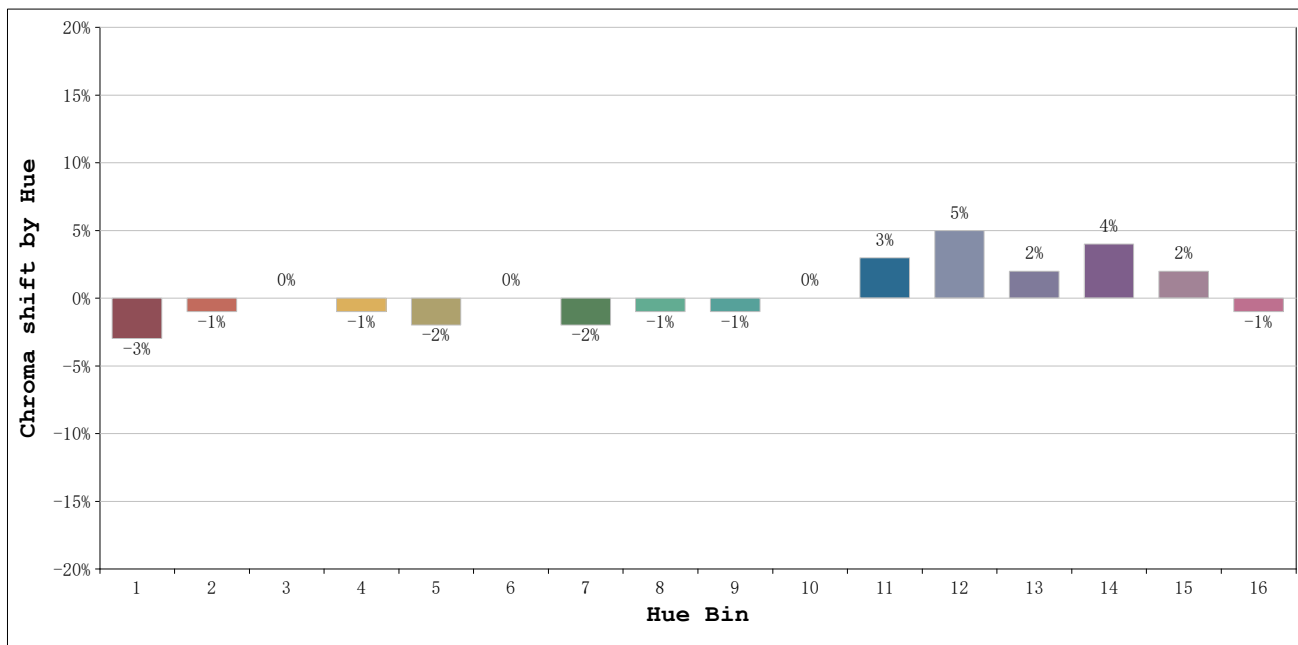
Number:4000K 20° Panal de abeja
Date:2026-03-23 08:37:40
Humidity:50%
Remarks:1 unidad

Rf: 91 **CCT: 4058 K** **u': 0.2247**
Rg: 99 **Duv: -0.0010** **v': 0.4993**



Model:Spotia Zomm CTT
 Tester:Sergio Carneros
 Temperature:20Deg
 Manufacturer:Luz Negra

Number:4000K 20° Panal de abeja
 Date:2026-03-23 08:37:40
 Humidity:50%
 Remarks:1 unidad

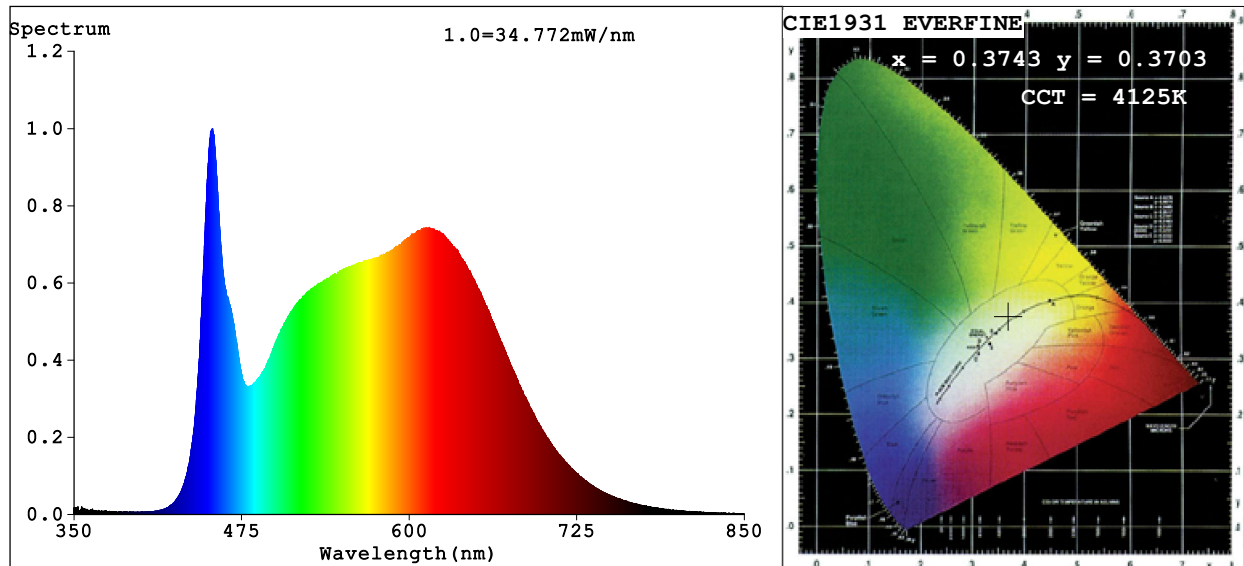


			Graphic shift(%)	
Hue Bin	Hue Angle	Rf	Chroma	Hue
1	0.0° - 22.5°	90	-3	0
2	22.5° - 45.0°	93	-1	2
3	45.0° - 67.5°	91	0	3
4	67.5° - 90.0°	92	-1	1
5	90.0° - 112.5°	92	-2	1
6	112.5° - 135.0°	96	0	0
7	135.0° - 157.5°	91	-2	0
8	157.5° - 180.0°	96	-1	1
9	180.0° - 202.5°	91	-1	5
10	202.5° - 225.0°	84	0	8
11	225.0° - 247.5°	85	3	10
12	247.5° - 270.0°	88	5	3
13	270.0° - 292.5°	92	2	-3
14	292.5° - 315.0°	88	4	-5
15	315.0° - 337.5°	85	2	-7
16	337.5° - 360.0°	90	-1	-3

Model:Spotia Zomm CTT
 Tester:Sergio Carneros
 Temperature:20Deg
 Manufacturer:Luz Negra

Number:4000K 20° Panal de abeja
 Date:2026-03-23 08:37:40
 Humidity:50%
 Remarks:1 unidad

Spectrum Test Report



Color Parameters:

Chromaticity Coordinate: $x=0.3743$ $y=0.3703$ $u'=0.2236$ $v'=0.4978$

CCT=4125K (Duv=-0.0012) Dominant WL:Ld =579.3nm Purity=23.5%

Ratio:R=19.7% G=75.7% B=4.5%; Peak WL:Lp=453.2nm FWHM=24.2nm

Render Index:Ra=94.4 CRI=91.5 TM30:Rf=90 Rg=99

R1 =96 R2 =98 R3 =97 R4 =94 R5 =94 R6 =94 R7 =94

R8 =88 R9 =73 R10=93 R11=94 R12=70 R13=97 R14=98 R15=94

Photo Parameters:

Flux = 1583 lm Eff. : 55.08 lm/W Fe = 5.465 W

Electrical parameters:

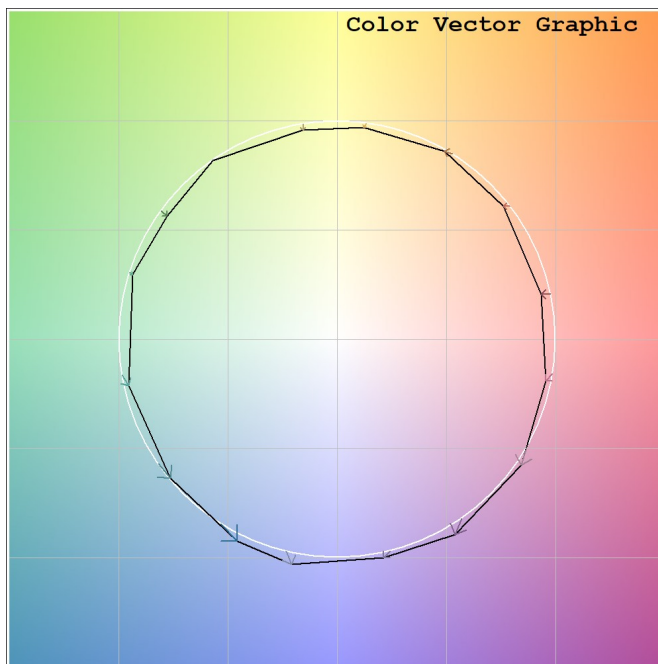
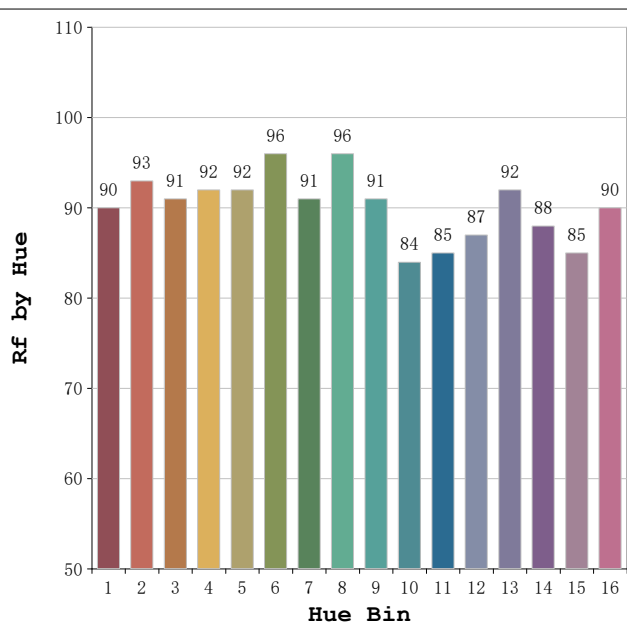
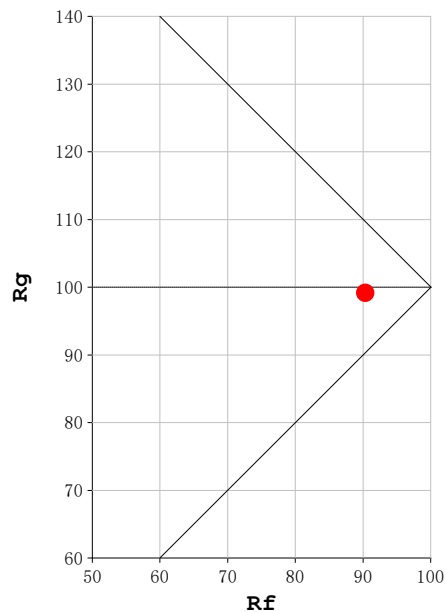
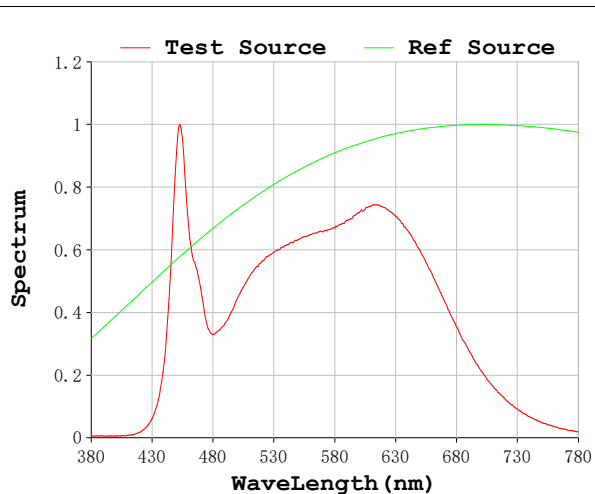
V = 230.07 V I = 0.1309 A P = 28.75 W PF = 0.9549

Status: Integral T = 888 ms Ip = 41562 (63%)

Model:Spotia Zomm CTT
Tester:Sergio Carneros
Temperature:20Deg
Manufacturer:Luz Negra

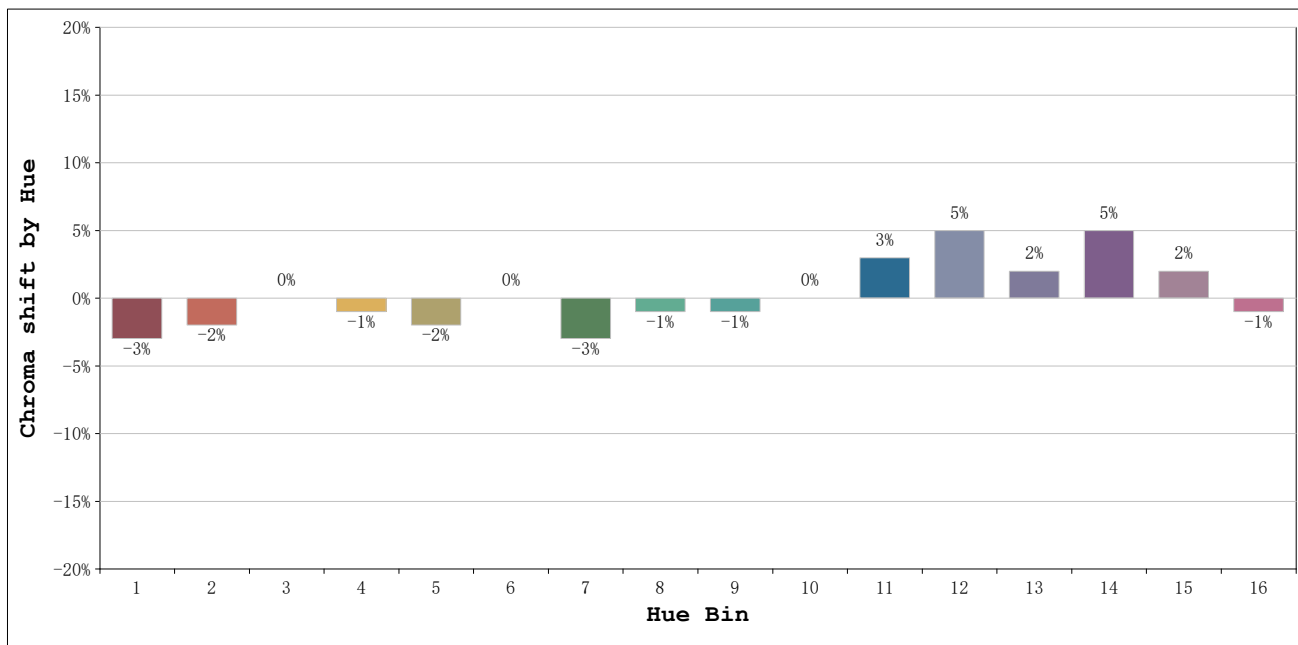
Number:4000K 50° Panal de abeja
Date:2026-03-23 08:38:52
Humidity:50%
Remarks:1 unidad

Rf: 90 **CCT: 4125 K** **u': 0.2236**
Rg: 99 **Duv: -0.0012** **v': 0.4978**



Model:Spotia Zomm CTT
 Tester:Sergio Carneros
 Temperature:20Deg
 Manufacturer:Luz Negra

Number:4000K 50° Panal de abeja
 Date:2026-03-23 08:38:52
 Humidity:50%
 Remarks:1 unidad



Hue Bin	Hue Angle	Rf	Graphic shift(%)	
			Chroma	Hue
1	0.0° - 22.5°	90	-3	0
2	22.5° - 45.0°	93	-2	2
3	45.0° - 67.5°	91	0	4
4	67.5° - 90.0°	92	-1	1
5	90.0° - 112.5°	92	-2	1
6	112.5° - 135.0°	96	0	0
7	135.0° - 157.5°	91	-3	0
8	157.5° - 180.0°	96	-1	1
9	180.0° - 202.5°	91	-1	5
10	202.5° - 225.0°	84	0	9
11	225.0° - 247.5°	85	3	11
12	247.5° - 270.0°	87	5	3
13	270.0° - 292.5°	92	2	-3
14	292.5° - 315.0°	88	5	-6
15	315.0° - 337.5°	85	2	-7
16	337.5° - 360.0°	90	-1	-3

Model:Spotia Zomm CTT
 Tester:Sergio Carneros
 Temperature:20Deg
 Manufacturer:Luz Negra

Number:4000K 50° Panal de abeja
 Date:2026-03-23 08:38:52
 Humidity:50%
 Remarks:1 unidad